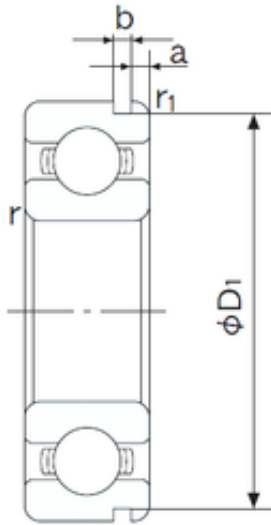




Shandong Zhongyue Precision Bearing C...



45 mm x 100 mm x 25 mm NACHI 6309N deep groove ball bearings

Bearing No. 6309N

6309N Bearing 2D drawings and 3D CAD models

Size	45x100x25 mm
Bore Diameter	45 mm
Outer Diameter	100 mm
Width	25 mm
d	45 mm
D	100 mm
B	25 mm
C	25 mm
a	3.28 mm
b	2.7 mm
r min.	1.5 mm
r1 min.	0.5 mm
D1	96.8 mm
Weight	0.833 Kg
Basic dynamic load rating (C)	53 kN
Basic static load rating (C0)	32 kN
(Grease) Lubrication Speed	6700 r/min
Bore Type	Cylindrical Bore
Enclosure	Open
Configuration	Single Row
Bore Size	45 mm
Outside Diameter	100 mm
Width	25 mm
Fillet Radius/Chamfer	1.5 mm
r1	0.5 mm



Shandong Zhongyue Precision Bearing C...

Groove Width	2.7 mm
Groove Diameter	96.8 mm
a (max)	3.3 mm
Dynamic Load Rating	53,000 N
Static Load Rating	32,000 N
Limiting Speed - Grease	7,000 rpm
Limiting Speed - Oil	8,200 rpm
Factor fo	13.1
Radial Clearance	0.006 to 0.023 mm
da (min)	54 mm
Da (max)	91 mm
Dx (min)	108 mm
ra (max)	1.5 mm
Cy (max)	5.4 mm